



# CHESAPEAKE STATION

7863–7955 BAYSIDE ROAD, CHESAPEAKE BEACH, MD 20732

## OVERVIEW

Situated near the shores of the Chesapeake Bay, the Chesapeake Station shopping center is the only grocery-anchored center in the community and acts as the commercial hub of the immediate trade-area. The adjacent Rod N' Reel resort is undergoing a renovation and 250-Key expansion delivering spring 2025.

**SPACE AVAILABLE**  
2,000 – 2,440 sq. ft.

**CENTER TYPE**  
Neighborhood

**GROSS LEASABLE AREA**  
42,130 sq. ft.

**COUNTY**  
Calvert

**TRAFFIC COUNT**  
Bayside Road – 14,511 VPD

## CURRENT RETAILERS



## CHESAPEAKE STATION

7863–7955 BAYSIDE ROAD, CHESAPEAKE BEACH, MD 20732

## CONTACT US

301.657.7330  
leasing@willardretail.com  
willardretail.com





## DEMOGRAPHICS

1, 3, 5-MILE RADIUS



RADIUS



HH INCOME



MEDIAN AGE

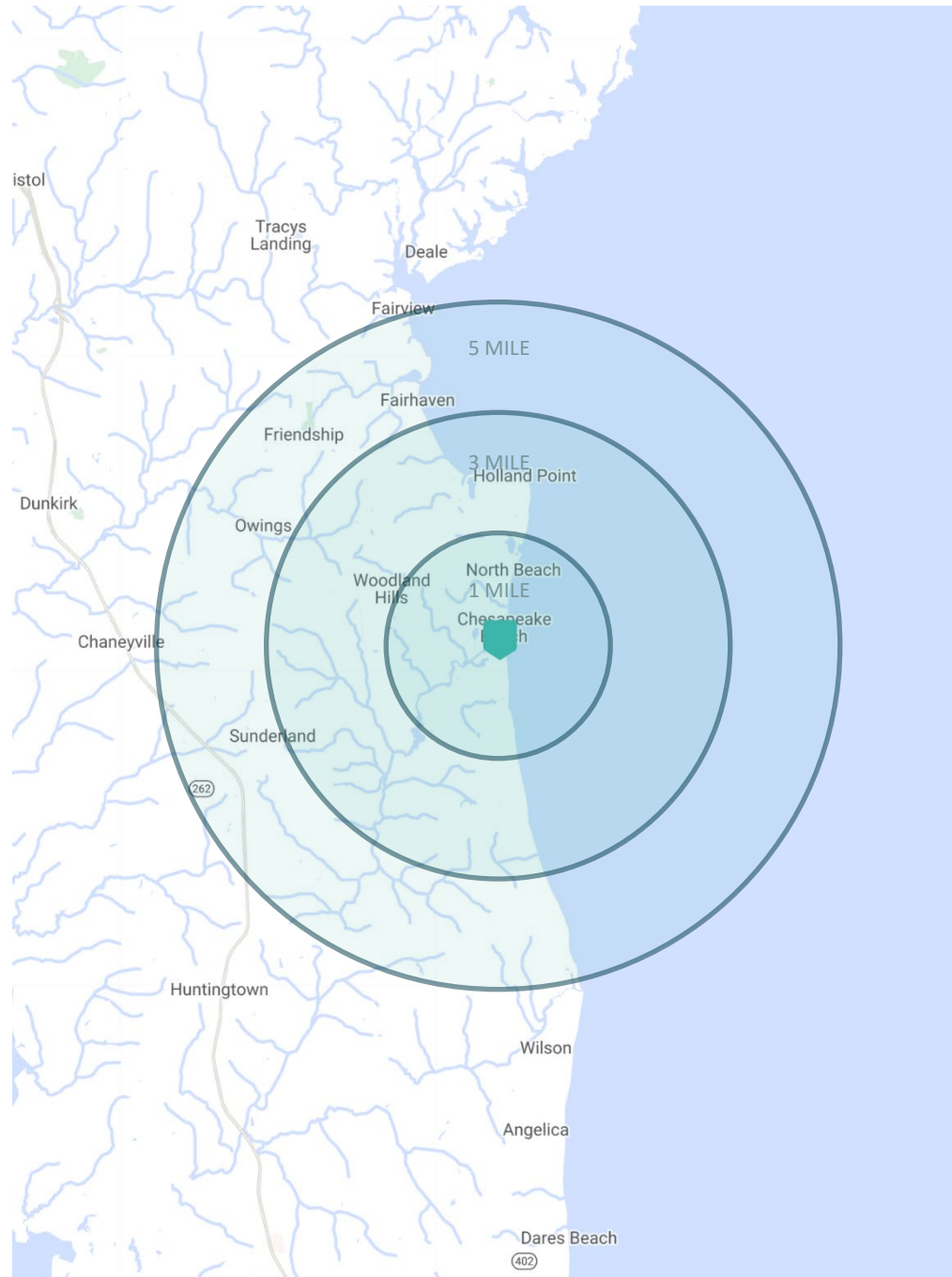


HOUSEHOLDS



POPULATION

RADIUS	HH INCOME	MEDIAN AGE	HOUSEHOLDS	POPULATION
1 Mile	\$147,499	37.8	2,223	5,957
3 Mile	\$144,597	39.4	6,374	16,694
5 Mile	\$157,505	41.5	9,215	24,980



# CHESAPEAKE STATION

7863-7955 BAYSIDE ROAD, CHESAPEAKE BEACH, MD 20732

## CONTACT US

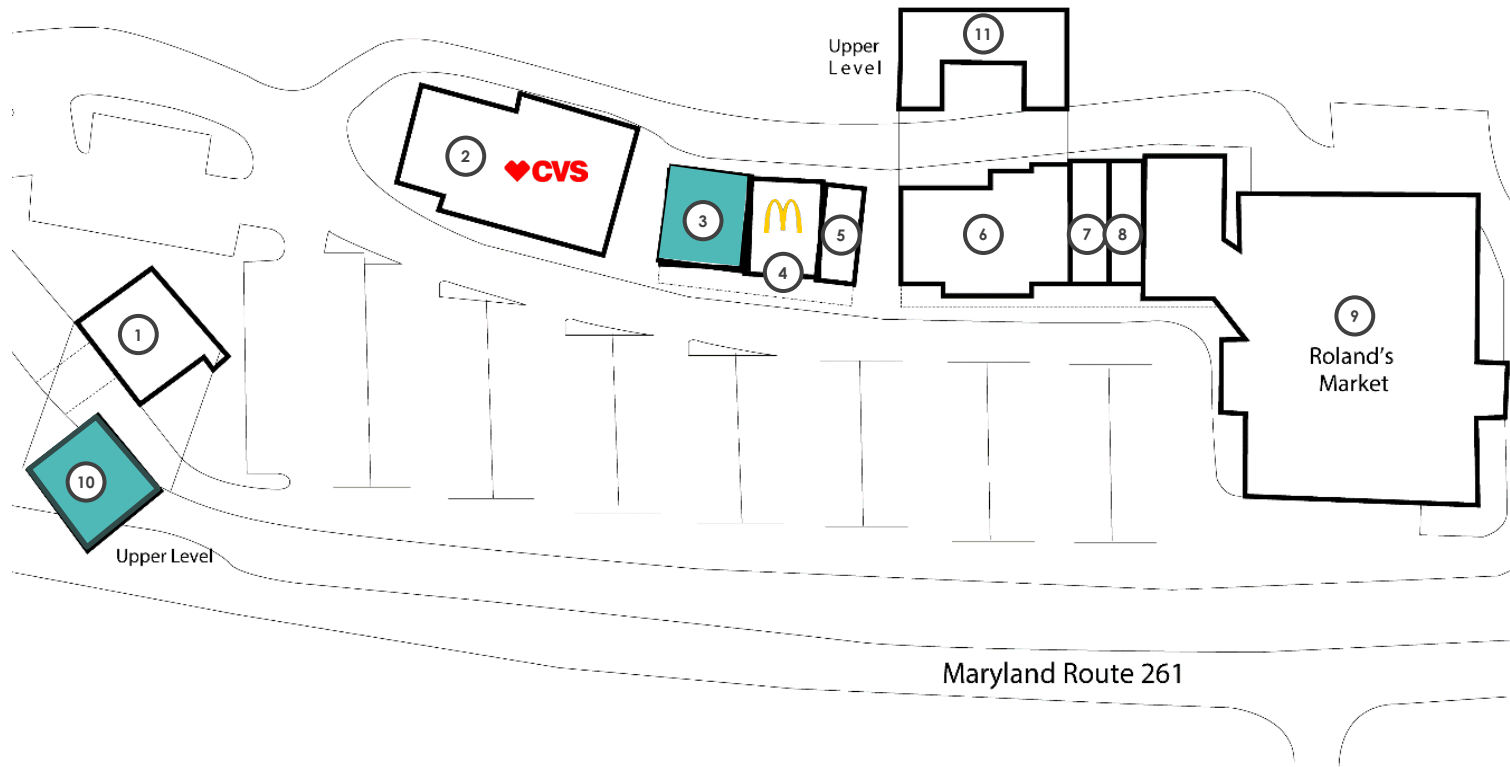
301.657.7330  
[leasing@willardretail.com](mailto:leasing@willardretail.com)  
[willardretail.com](http://willardretail.com)





# CHESAPEAKE STATION

## SITE PLAN



<u>SUITE</u>	<u>TENANT</u>	<u>SF</u>
1	PNC BANK	2,362 SF
2	CVS	6,646 SF
3	AVAILABLE	2,000 SF
4	MCDONALD'S	2,000 SF
5	SUBWAY	1,000 SF
6	POST OFFICE	4,555 SF
7	DOMINOS	1,314 SF
8	LITTLE PANDA	1,314 SF
9	ROLAND'S SUPERMARKET	16,675 SF
10	AVAILABLE	2,440 SF
11	CNC PRODUCTIONS	1,974 SF

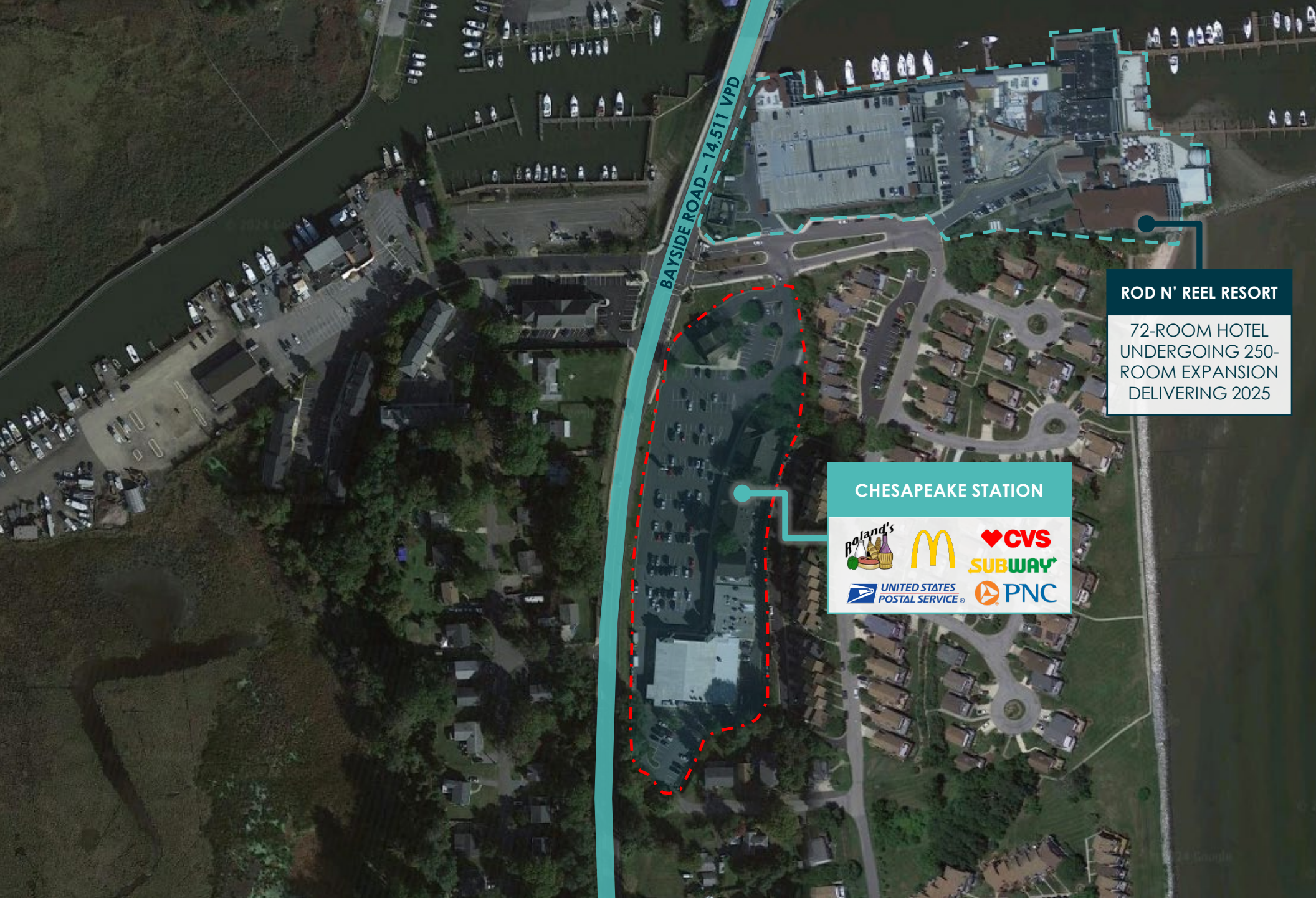
# CHESAPEAKE STATION

7863-7955 BAYSIDE ROAD, CHESAPEAKE BEACH, MD 20732

## CONTACT US

301.657.7330  
leasing@willardretail.com  
willardretail.com





BAYSIDE ROAD - 14,511 VPD

**ROD N' REEL RESORT**  
72-ROOM HOTEL  
UNDERGOING 250-  
ROOM EXPANSION  
DELIVERING 2025

**CHESAPEAKE STATION**



# CHESAPEAKE STATION

7863-7955 BAYSIDE ROAD, CHESAPEAKE BEACH, MD 20732

## CONTACT US

301.657.7330  
leasing@willardretail.com  
willardretail.com







WASHINGTON, D.C.

BALTIMORE

45 MINUTE DRIVE

1 HOUR DRIVE

CHESAPEAKE BEACH

# CHESAPEAKE STATION

7863-7955 BAYSIDE ROAD, CHESAPEAKE BEACH, MD 20732

## CONTACT US

301.657.7330  
[leasing@willardretail.com](mailto:leasing@willardretail.com)  
[willardretail.com](http://willardretail.com)





**WILLARD**

**WILLARDRETAIL.COM**

4800 Hampden Lane | Suite 800 | Bethesda, MD 20814

**301.657.7330**